

# ECHA Guidance for Downstream users The essentials

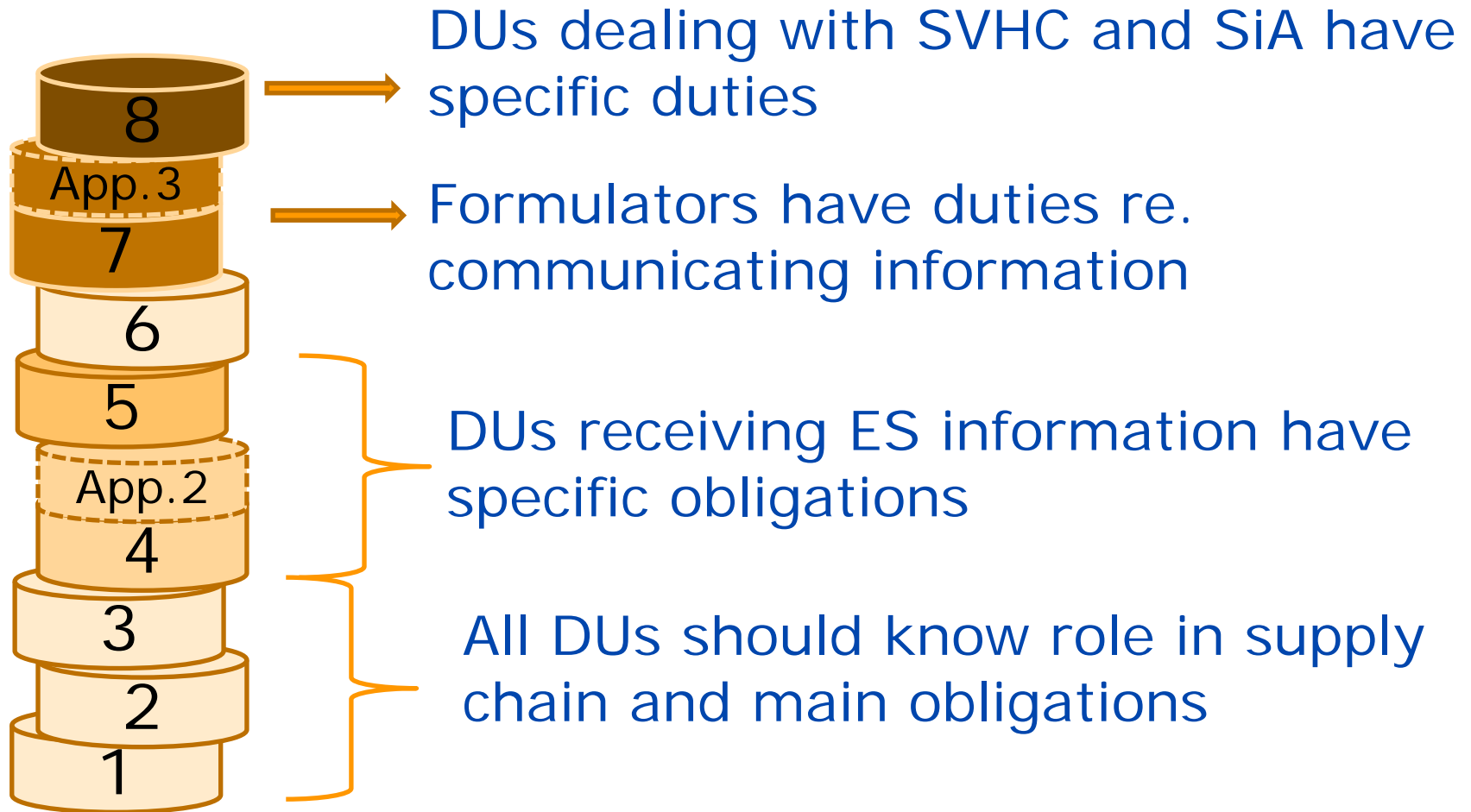
## Conclusions

05 March 2014

European Chemicals Agency



# Key Messages



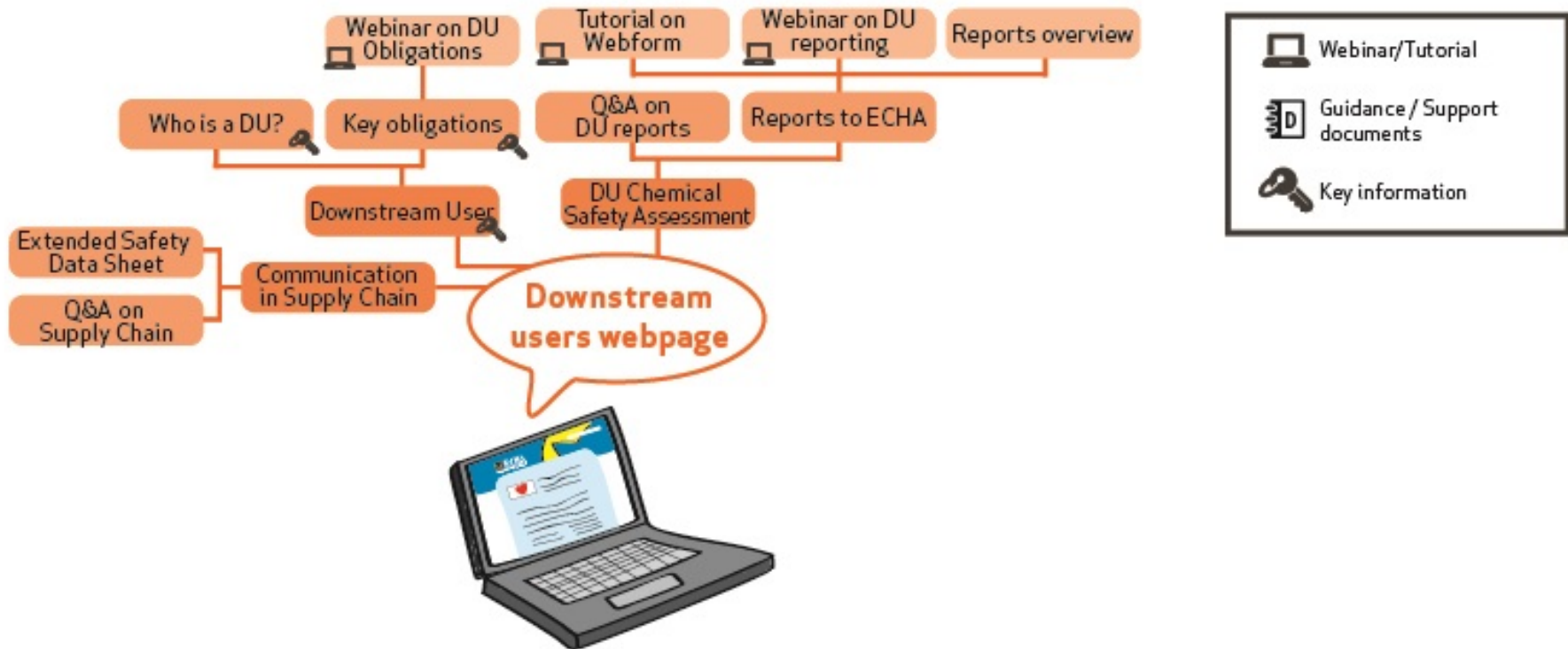
## Additional Support

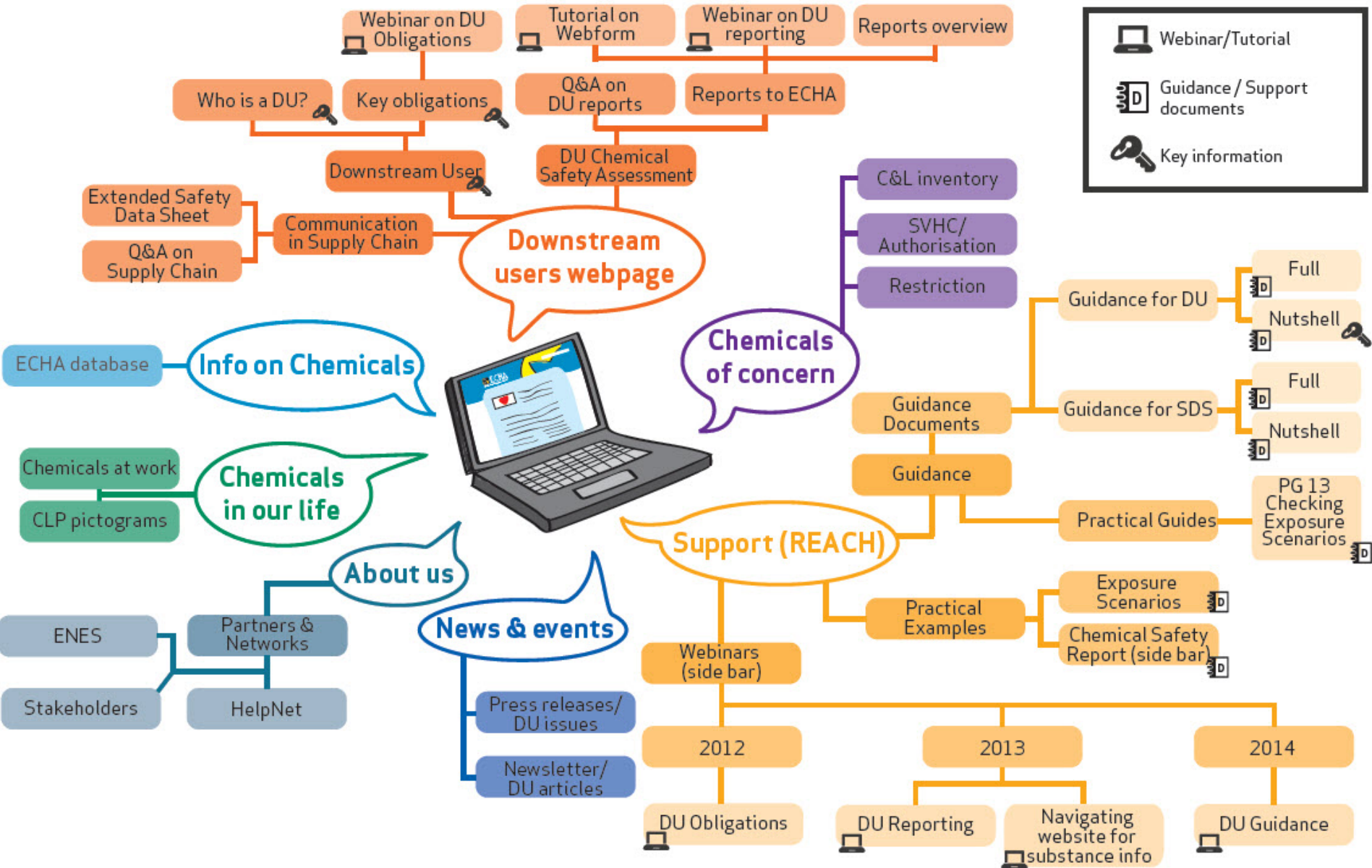
- Downstream Users of Chemicals Co-ordination group (DUCC)
- Sector organisations
- Helpdesks:
  - National helpdesks
  - ECHA Helpdesk

# Information on the ECHA website



# Information on the ECHA website





# Questions and Answers

- Questions will still be answered through the Q&A panel
  - You can continue to submit questions until 13:00
  - Panelists will continue to answer your questions until 13:30 Helsinki time (EET, GMT +2) via the Q&A panel (first come, first served)
  - The event will close at 13:30 Helsinki time (EET, GMT +2)
  - If by then no answer is provided to your question, please send your question to the ECHA Helpdesk using the contact form: <http://echa.europa.eu/en/web/guest/contact>
- If you use the ECHA contact form:
  - You will receive an acknowledgement of receipt
  - Answer within 15 working days

# Feedback questionnaire

- Once the event has ended, you will be automatically directed to a post-event questionnaire page
- Your feedback is important to us and helps us make the content of future webinars more relevant for your needs
- Please take the time to fill out the questionnaire



Thank you!

